

An architectural rendering of a modern residential building, St. Paul's Court, at dusk. The building features a mix of light and dark grey facades, with balconies on the right side. A car is parked in the foreground, and palm trees are visible near the base of the building. The overall scene is dimly lit, with the sky transitioning from dark blue to black.

# St. Paul's Court

Triq Il-Korp Tal-Pjunieri, St.Paul's Bay

Residential Development Project

Presented by Esthetica Studios

**ESTHETICA**  
STUDIOS



# St. Paul's Court

---

## Contents

- 00 Contents Page
- 01 Project Brief
- 02 The Location
- 03 Plans
- 04 Renders
- 05 Payment Terms
- 06 Contact

# Project brief

## Completion Date & Details:

To be finished by December 2024 and to be sold in finished state including bathrooms & doors.

## Project details:

This development will consist of 40 residential units consisting of apartments and penthouses. The units will be between 1,2 or 3 bedroom all varying in size and prices. The standard finish state mentioned above will be included for all units.

## Common Parts:

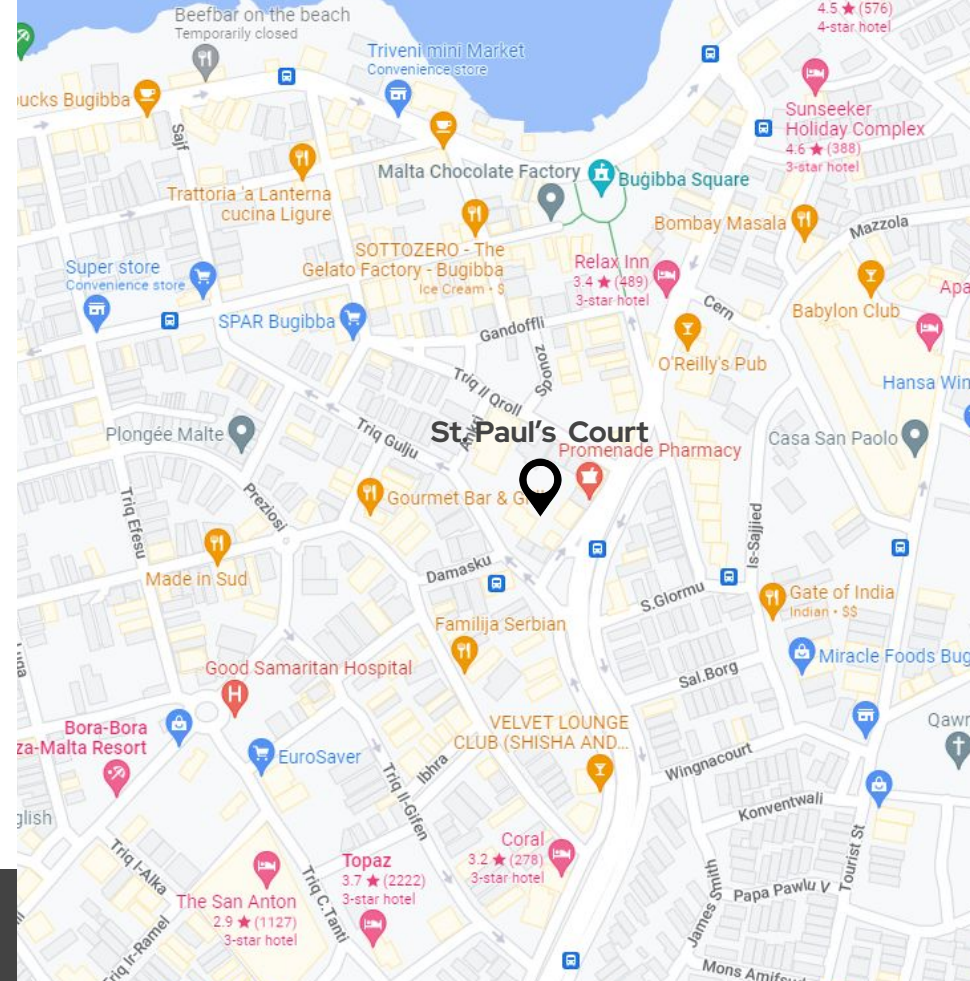
The project is complemented with modernized common parts and a pool area which is well maintained and modernized.



# The Location

St. Paul's Bay (Maltese: San Pawl il-Baħar) is a town in the Northern Region of Malta, sixteen kilometres (9.9 miles) northwest of the capital Valletta. Saint Paul's Bay is the largest town in the Northern Region and the seat of the Northern Regional Committee.

Its name refers to the shipwreck of Saint Paul as documented in the Acts of the Apostles on St. Paul's Islands near St Paul's Bay, on his voyage from Caesarea to Rome, which laid the foundations of Christianity on the island.



Triq Il-Korp Tal-Pjunieri, St. Paul's Bay

Amenities



Bus Stop

<1 Minute



Shopping

<1 Minute



Airport

25 Minutes



Public Spaces

<1 Minute



Restaurant

<1 Minute



Gym

<1 Minute

## St. Paul's Court

Triq Il-Korp Tal-Pjunieri, St. Paul's Bay

A nighttime architectural rendering of a modern apartment building. The building features a mix of light and dark facades, with balconies and large windows. Some windows are illuminated from within, and the balconies have glass railings. In the foreground, there are palm trees and a dark car parked on the street. The overall atmosphere is dark and sophisticated.

# Plans

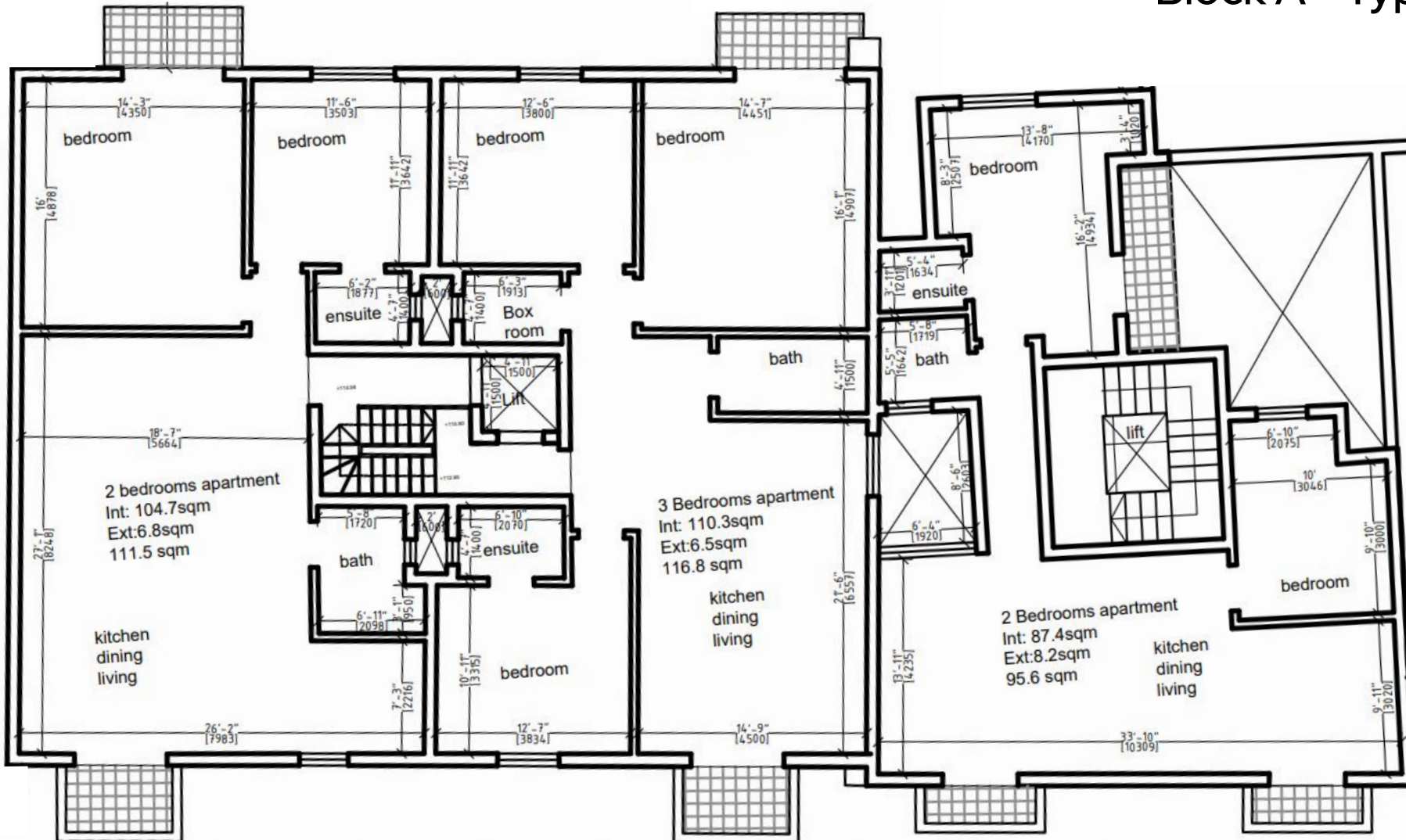
## St. Paul's Court

Triq Il-Korp Tal-Pjunieri, St. Paul's Bay

# St. Paul's Court

Triq Il-Korp Tal-Pjunieri, St. Paul's Bay

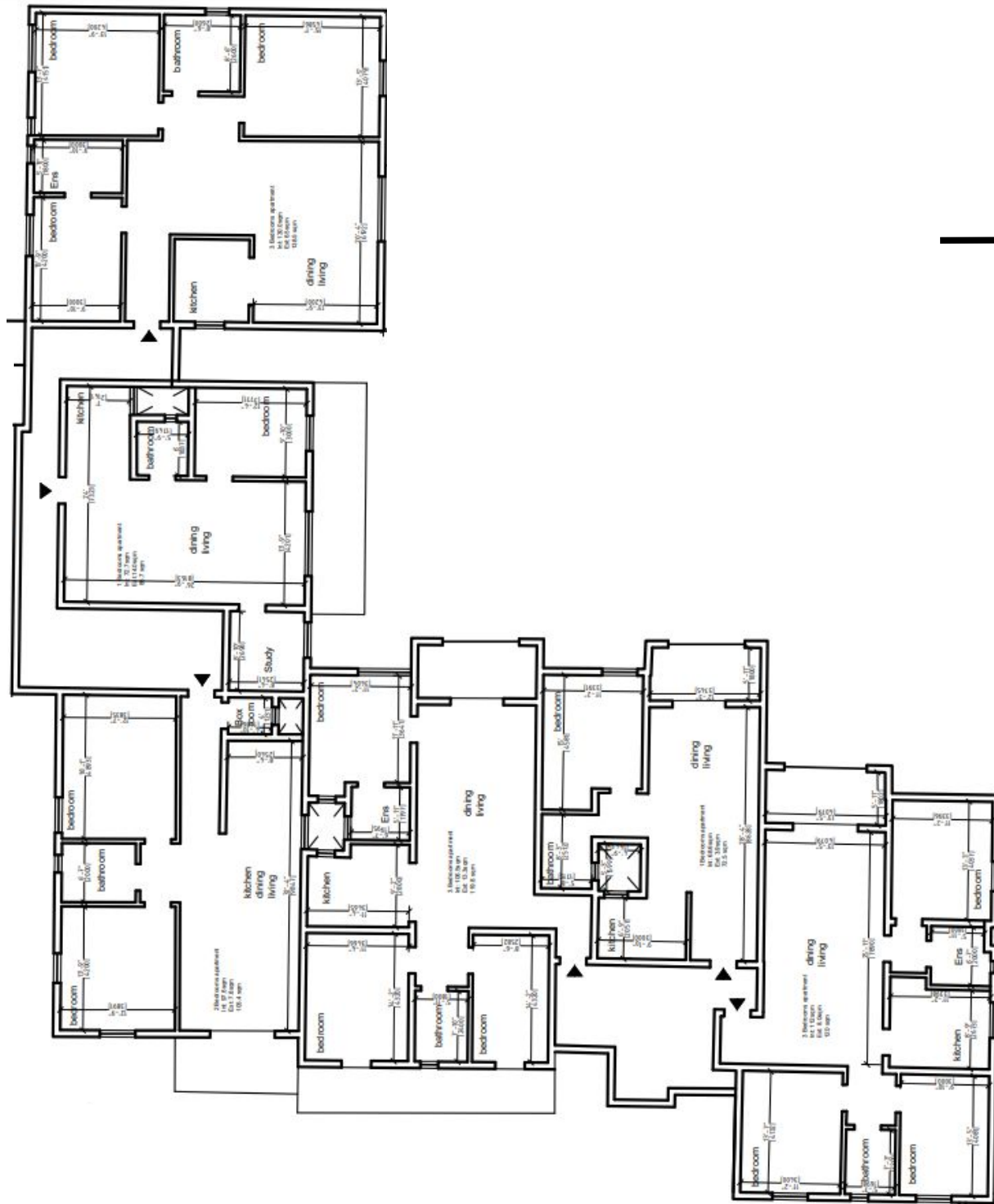
## Block A - Typical Floor



# St. Paul's Court

Triq Il-Korp Tal-Pjunieri, St. Paul's Bay

## Block B - Typical Floor





# St. Paul's Court

Triq Il-Korp Tal-Pjunieri, St. Paul's Bay

## Block C - Typical Floor





# Renders

St. Paul's Court

Triq Il-Korp Tal-Pjunieri, St. Paul's Bay



Triq II-Korp Tal- Pjunieri - Facade Day time



Triq II-Korp Tal- Pjunieri - Night time



Triq II-Korp Tal- Pjunieri - Facade Day time



Triq II-Korp Tal- Pjunieri - Night time



Triq II-Korp Tal- Pjunieri - Facade Day time



Triq II-Korp Tal- Pjunieri - Night time



Triq II-Korp Tal- Pjunieri - Facade Day time



Triq II-Korp Tal- Pjunieri - Night time



Triq II-Korp Tal- Pjunieri - Facade Day time



Triq II-Korp Tal- Pjunieri - Night time



Triq II-Korp Tal- Pjunieri - Facade Day time



Triq II-Korp Tal- Pjunieri - Night time





Triq II-Korp Tal- Pjunieri - Facade Day time



Triq II-Korp Tal- Pjunieri - Night time



Triq II-Korp Tal- Pjunieri - Facade Day time



Triq II-Korp Tal- Pjunieri - Night time



Interior Visuals - Open Plan Area



Interior Visuals - Open Plan Area



Interior Visuals - Open Plan Area



Interior Visuals - Open Plan Area

# Payment Terms

**St. Paul's Court**

Triq Il-Korp Tal-Pjunieri, St. Paul's Bay

# St. Paul's Court

Triq Il-Korp Tal-Pjunieri, St. Paul's Bay

Contact us:

